

Compact Braking resistor

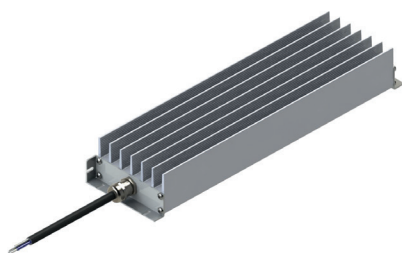
BW 156

BW 156/400 - 1500 W

Advantages

- Protection class IP20 / IP65
- Small dimensions at high output
- Fast connection
- Short-circuit proof
- Very good heat dissipation
- High-resistance at overload
- Options available with terminal covers and temperature switches
- Installation also possible outside the control cabinet
- Also with UL certification

Compact Braking resistor BW 156



Technical data

Compact Braking resistor BW 156				
Type	Resistance R [Ohm] to the E12 series*	Continuous output P [W] IP20	Continuous output P [W] IP65	max. operating voltage U [V]
BW 156 / 400 / IP..	1 - 820	400	300	900
BW 156 / 600 / IP..	1 - 820	600	400	
BW 156 / 800 / IP..	1,8 - 820	800	500	
BW 156 / 1000 / IP..	2,2 - 820	1000	600	
BW 156 / 1200 / IP..	2,2 - 820	1200	700	
BW 156 / 1500 / IP..	2,7 - 820	1500	800	



Typical applications: Braking resistor for drives with frequency converters of small to medium output. Installation in or outside of the control cabinet is possible: Test voltage 2,5 kV AC

In the event of destruction, the resistor becomes high-impedance. Each series is available with a temperature switch. The specified performance values were measured at a horizontal position of the resistors in the air with a distance of min. 100mm to the substrate. The power values refer to the standard products with a normal tolerance of +/- 10% at an ambient temperature of 20°C.

*Other resistance values on request.

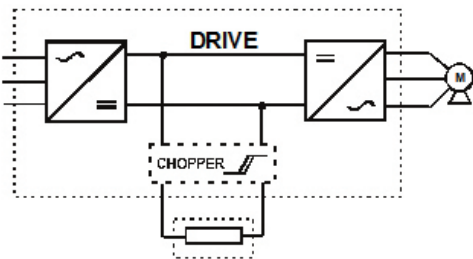
We are also happy to produce customer-specific solutions outside our standard portfolio - just contact us!

Mechanical data

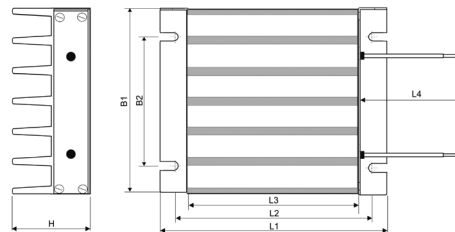
Compact Braking Resistors BW 156									
Type	Dimensions								Connection
	L1 [mm]	L2 [mm]	L3 [mm]	L4 [mm]	B1 [mm]	B2 [mm]	H [mm]	D [mm]	
BW 156 / 400 / IP...	170	155	140	500	104	70	53	4,5	IP20 PTFE AWG14
BW 156 / 600 / IP...	230	215	200	500	104	70	53	4,5	
BW 156 / 800 / IP...	300	285	270	500	104	70	53	4,5	
BW 156 / 1000 / IP...	370	355	340	500	104	70	53	4,5	
BW 156 / 1200 / IP...	450	435	420	500	104	70	53	4,5	
BW 156 / 1500 / IP...	600	585	570	500	104	70	53	4,5	

Compact Braking Resistors BW 156									
Type	Dimensions								Connection
	L1 [mm]	L2 [mm]	L3 [mm]	L4 [mm]	B1 [mm]	B2 [mm]	H [mm]	D [mm]	
BW 156 / 400 / IP...	174	159	140	1000	104	70	53	4,5	IP65 shielded connection cable 3x1,5 mm ²
BW 156 / 600 / IP...	234	219	200	1000	104	70	53	4,5	
BW 156 / 800 / IP...	304	289	270	1000	104	70	53	4,5	
BW 156 / 1000 / IP...	374	359	340	1000	104	70	53	4,5	
BW 156 / 1200 / IP...	454	439	420	1000	104	70	53	4,5	
BW 156 / 1500 / IP...	604	589	570	1000	104	70	53	4,5	

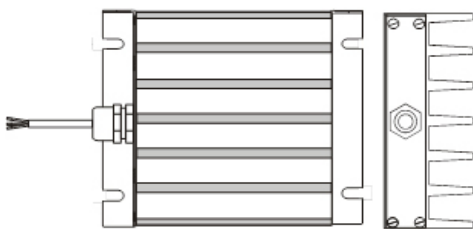
Circuit example



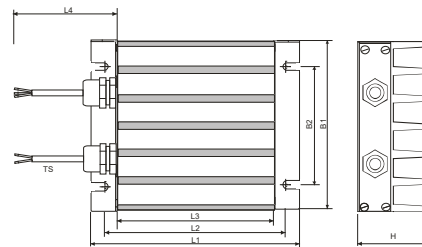
Design IP20



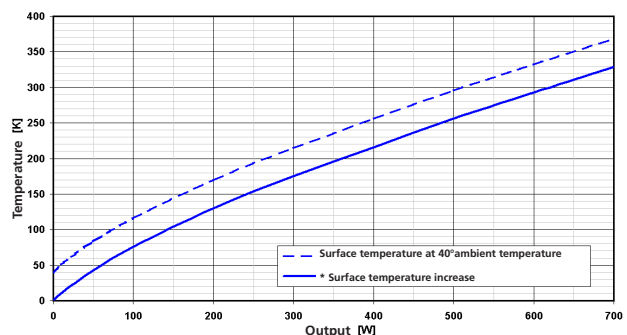
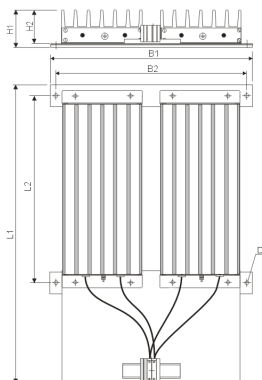
Design IP65



Design IP65 / TS



BW 156 Combination



Note: Continuous high temperature of > 200 K leads to a reduction of ingress protection. Other ratings upon request.