

Compact Braking resistor

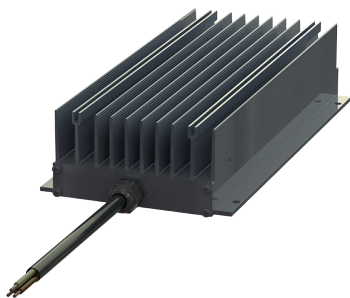
BW 155

BW 155/1000 - 3500 W

Advantages

- Protection class IP20 / IP65 / IP66
- Small dimensions at high output
- Fast connection
- Short-circuit proof
- Very good heat dissipation
- High-resistance at overload
- Options available with terminal covers and temperature switches
- Installation also possible outside the control cabinet

Compact Braking resistor BW 155



Certified for railway technology

Technical data

Compact Braking resistor BW 155				
Type	Resistance R [Ohm]	Continuous output P [W] IP20	Continuous output P [W] IP65, IP66	max. operating voltage U [V]
BW 155 / 1000 / IP..	1 - 1000	1000	600	900
BW 155 / 1200 / IP..	1,2 - 300	1200	800	
BW 155 / 1500 / IP..	1,5 - 280	1500	1000	
BW 155 / 2000 / IP..	2 - 1440	2000	1500	
BW 155 / 2500 / IP..	2,5 - 600	2500	1875	
BW 155 / 3000 / IP..	3 - 750	3000	2250	
BW 155 / 3500 / IP..	4 - 750	3500	2500	

In the event of destruction, the resistor becomes high-impedance. Each series is available with a temperature switch. The specified performance values were measured at a horizontal position of the resistors in the air with a distance of min. 100mm to the substrate. The power values refer to the standard products with a normal tolerance of +/- 10% at an ambient temperature of 20°C.

*Other resistance values on request.

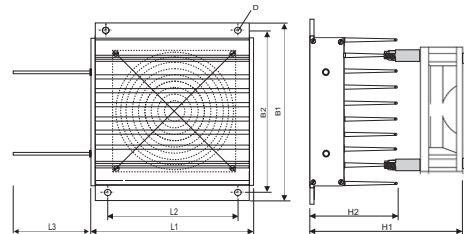
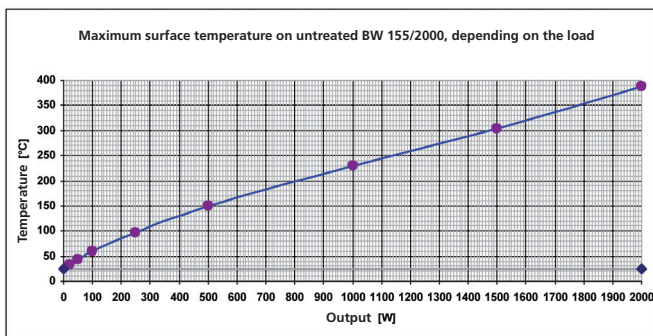
We are also happy to produce customer-specific solutions outside our standard portfolio - just contact us!

Mechanical data

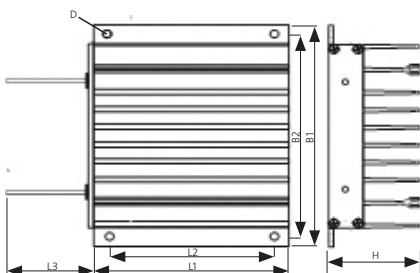
Compact Braking resistor BW 155								
Type	Dimensions							Connection*
	B1 [mm]	B2 [mm]	H [mm]	L1 [mm]	L2 [mm]	L3 [mm]	D [mm]	
BW 155 / 1000 / IP...	175	165	75	182	120	250	6,5	IP20 PTFE AWG14
BW 155 / 1200 / IP...	175	165	75	242	180	250	6,5	
BW 155 / 1500 / IP...	175	165	75	342	280	250	6,5	
BW 155 / 2000 / IP...	175	165	75	542	500	250	6,5	
BW 155 / 2500 / IP...	175	165	75	672	630	250	6,5	
BW 155 / 3000 / IP...	175	165	75	762	720	250	6,5	
BW 155 / 3500 / IP...	175	165	75	872	830	250	6,5	

Compact Braking resistor BW 155								
Type	Dimensions							Connection*
	B1 [mm]	B2 [mm]	H [mm]	L1 [mm]	L2 [mm]	L3 [mm]	D [mm]	
BW 155 / 1000 / IP...	175	165	75	182	120	1000	6,5	IP65 (IP66) shielded connection cable 3x1,5 mm ² oder 3x2,5 mm ²
BW 155 / 1200 / IP...	175	165	75	242	180	1000	6,5	
BW 155 / 1500 / IP...	175	165	75	342	280	1000	6,5	
BW 155 / 2000 / IP...	175	165	75	542	500	1000	6,5	
BW 155 / 2500 / IP...	175	165	75	672	630	1000	6,5	
BW 155 / 3000 / IP...	175	165	75	762	720	1000	6,5	
BW 155 / 3500 / IP...	175	165	75	872	830	1000	6,5	

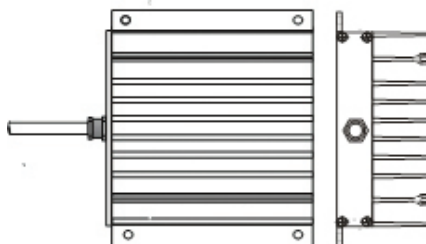
Typical applications: For drives with frequency converters of small to medium output, installation close to the frequency converter: Test voltage: 2,5 kV DC



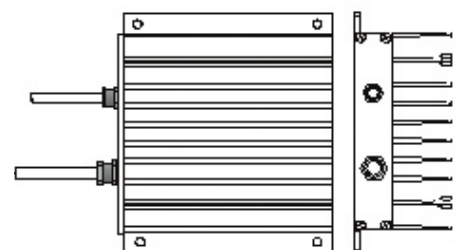
Design IP 20



Design IP65



Design IP65 / TS



* For low resistance values, the conductor cross-section is adapted to the current.